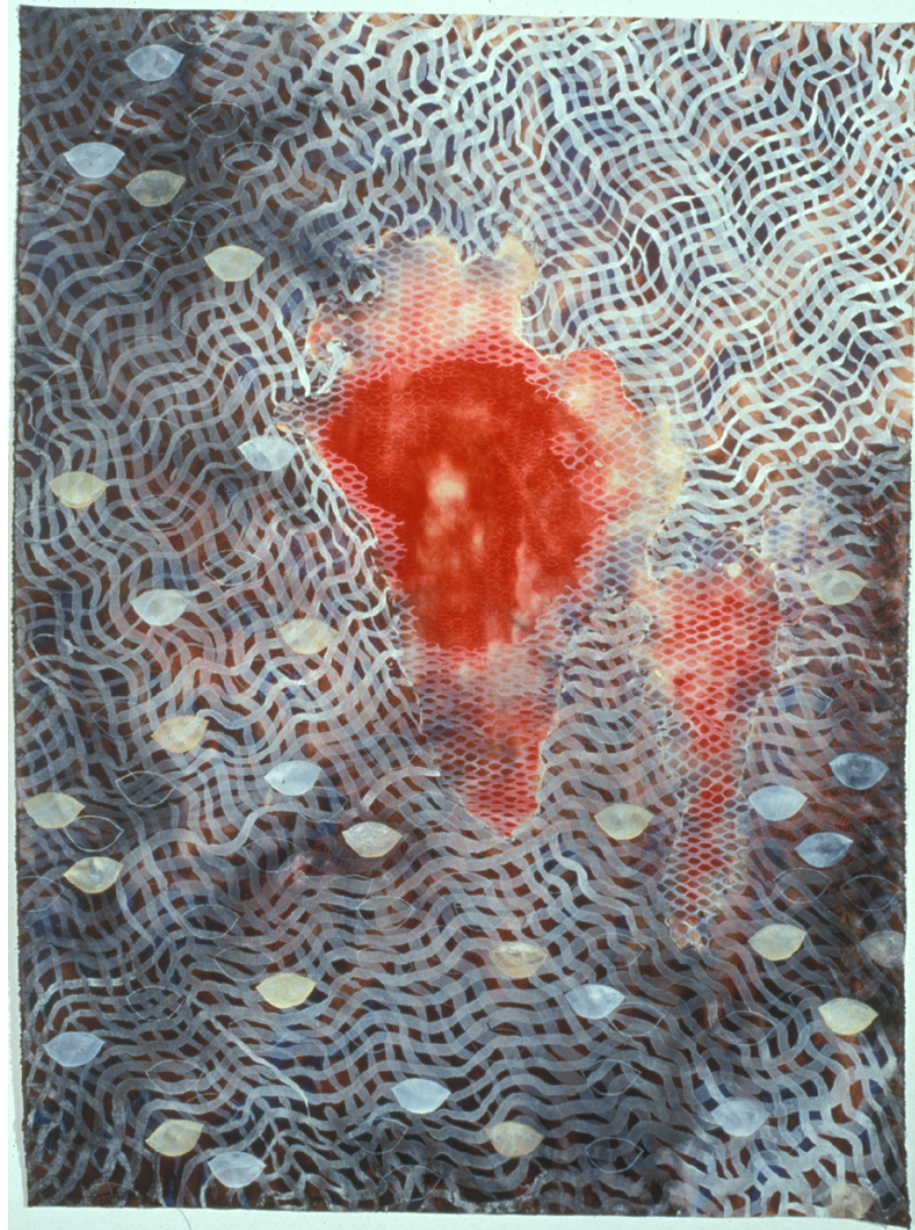


Judy Watson

BOH 2020



ghost ship with bailer shell 2012
pigment, pencil and acrylic on canvas
212 x 154 cm



shoal 1998
pigment, pastel, ink and watercolour on canvas
180 x 135 cm



flood 2011
pigment and acrylic on canvas
212 x 157.5cm



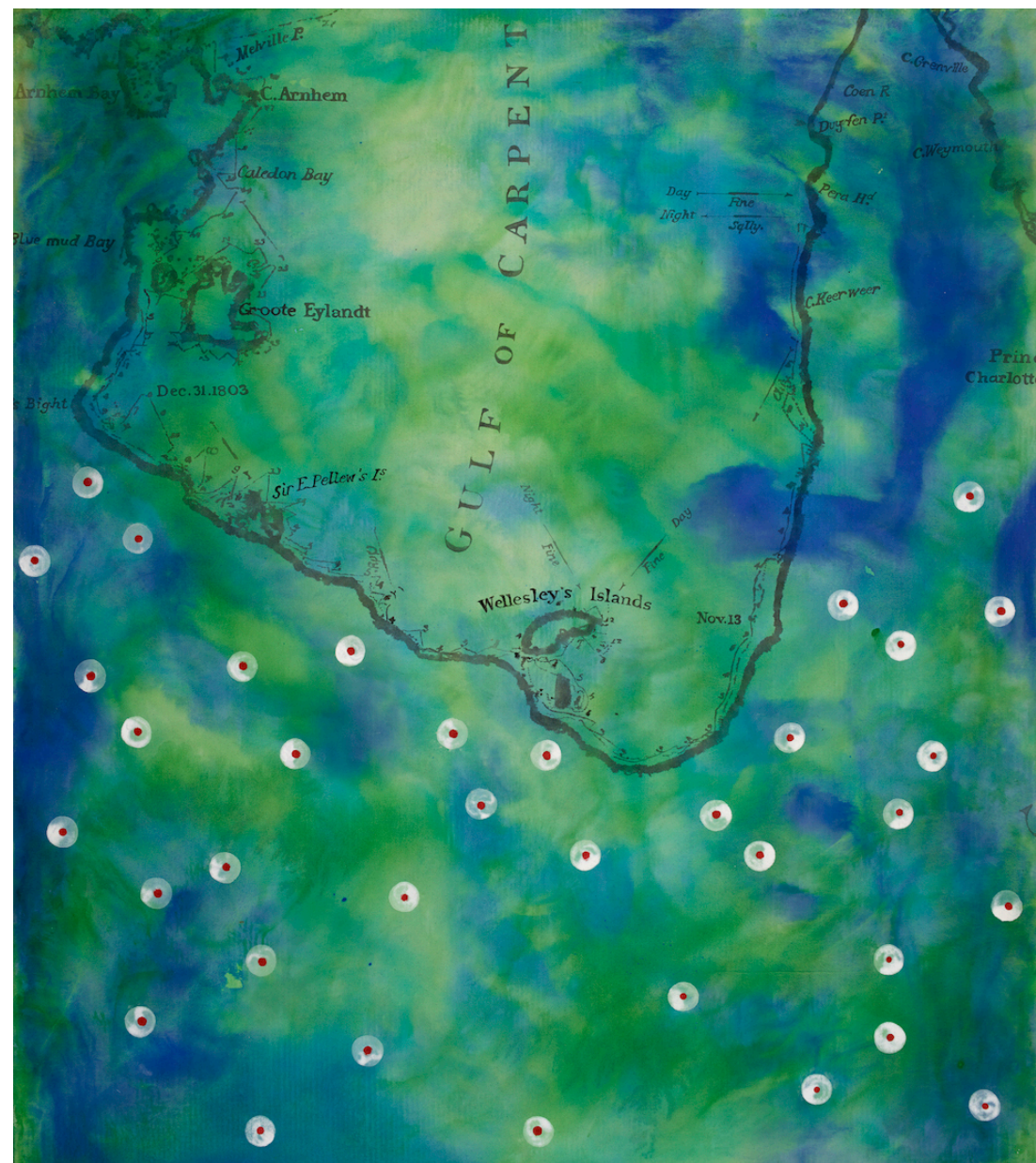
tow row 2016
bronze sculpture
GoMA



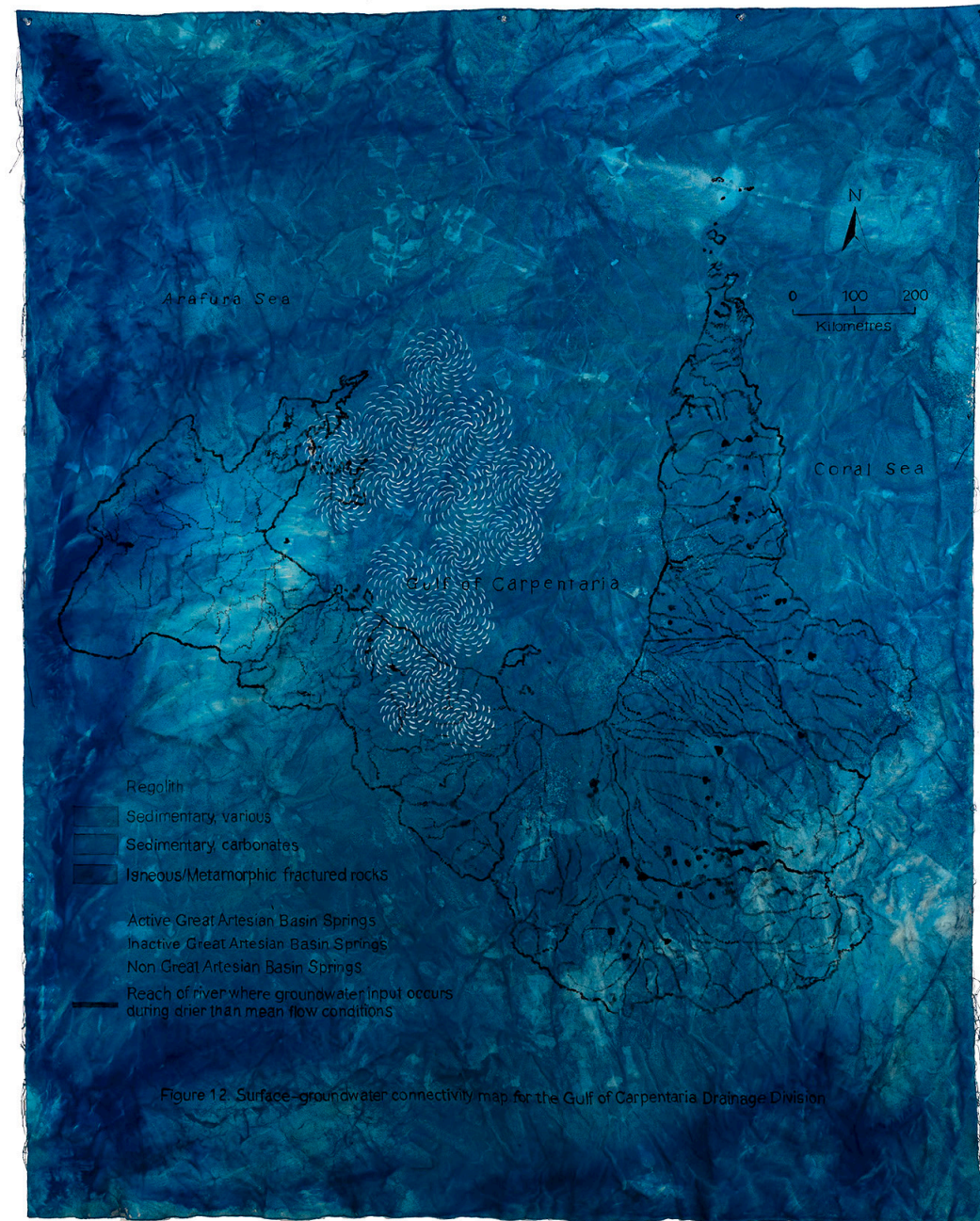
red float, flinders map, 2014
acrylic and pencil on canvas



boodjamulla wanami 2019
still taken from: single channel video 5.41 mins



a picnic with the natives – gulf 2015
pigment and acrylic on canvas
204.0 x 180.0 cm



great artesian basin springs, the gulf (jiwil, wanami) 2019
indigo, acrylic, graphite on canvas
212 x 169 cm



string over water (walkurrji kingkarri wanami) 2019
acrylic, graphite, pastel, watercolour pencil on canvas
261 x 180.5 cm



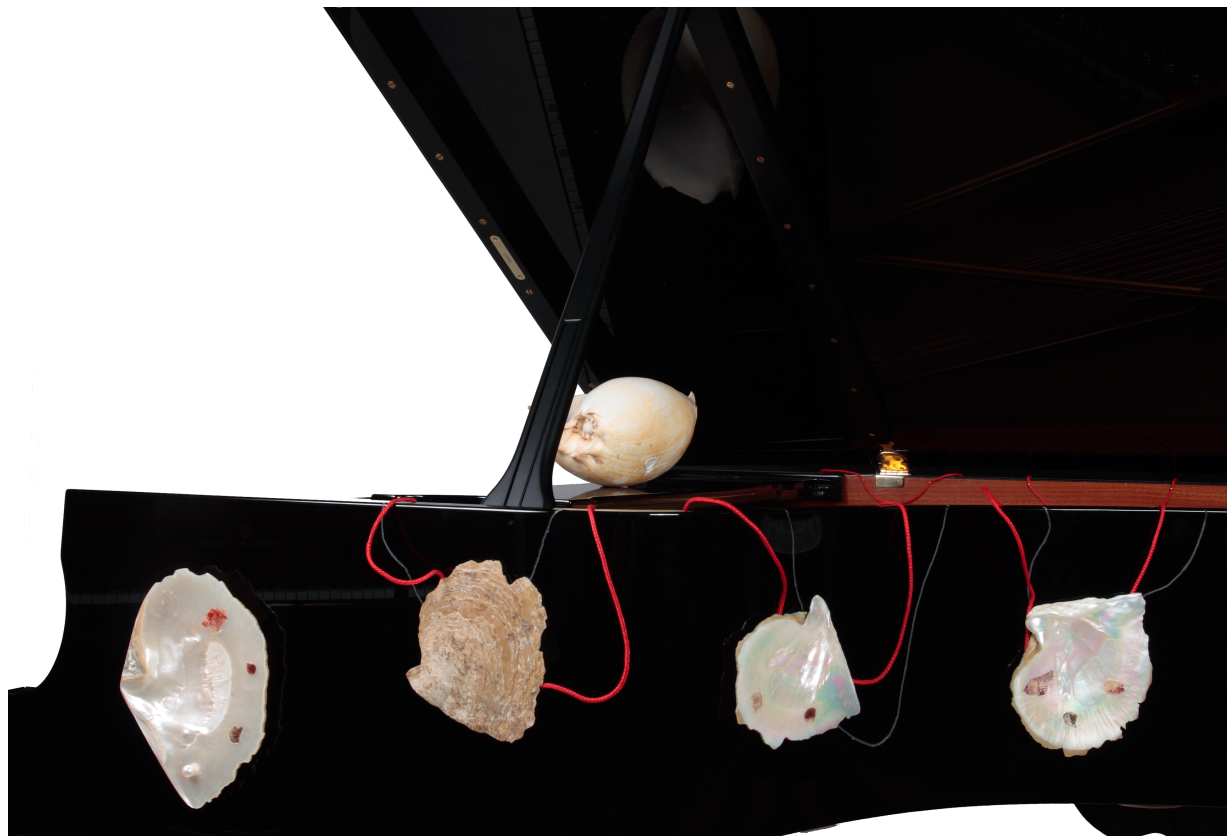
driftnet 1998
pigment, cotton, cord and string bark on canvas
180 x 136 cm



low tide walk 1991
pigment, pastel and charcoal on canvas
191 x 130 cm



ochre & blood, mother of pearl 2007



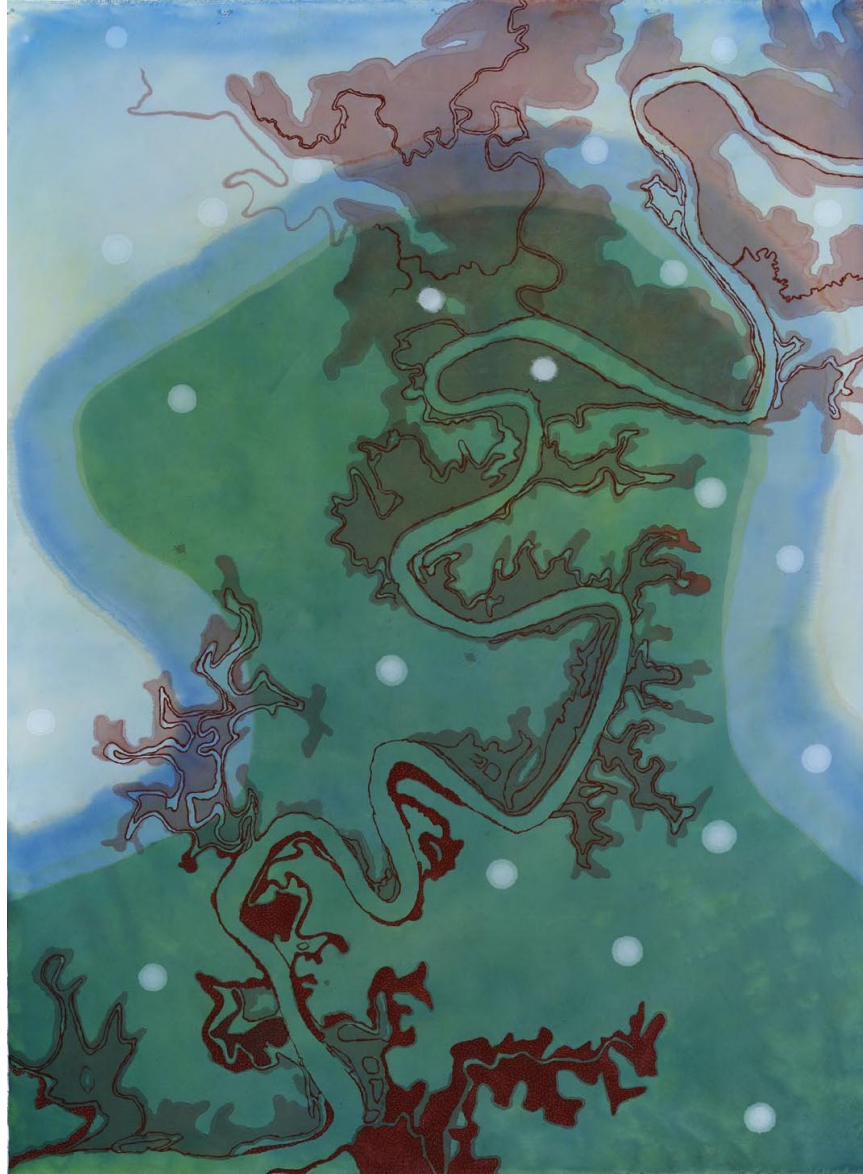
detail : ochre & blood, mother of pearl 2007



waterline 2001
pigment on linen
224 x 118 cm



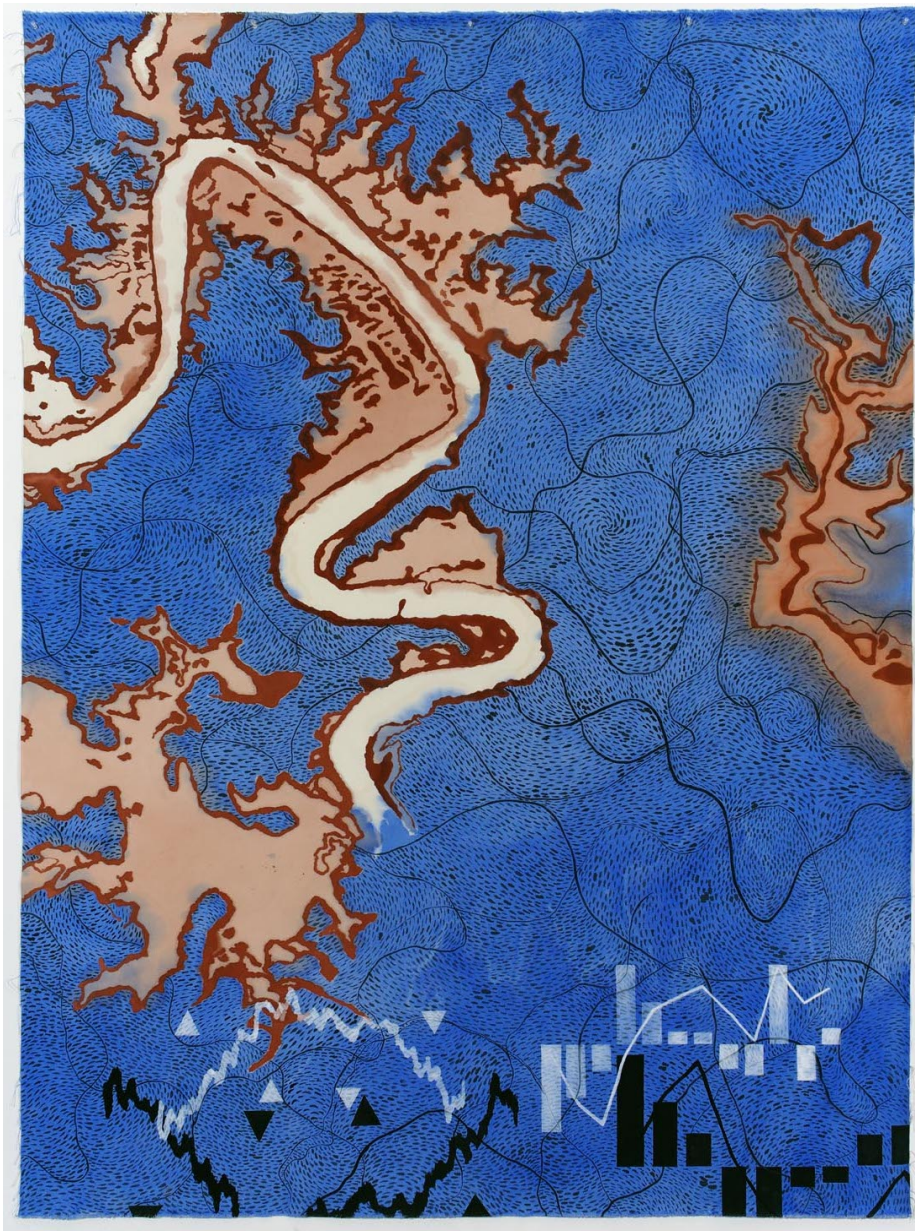
waterspout 1996
powder pigment and pastel on canvas
180 x 112 cm



red flood 2011
pigment, pencil and acrylic on canvas
212 x 157cm



sacred water 2010
pigment, pastel and acrylic on canvas
212 x 213 cm



water dragon 2011
acrylic, pencil and charcoal on canvas
213 x 156.5cm



gorge drawings 7 2001
ink and watercolour on paper
27 x 20 cm



spill 2009
pigment, carbon, acrylic and chinagraph pencil
on canvas
213 x 177 cm



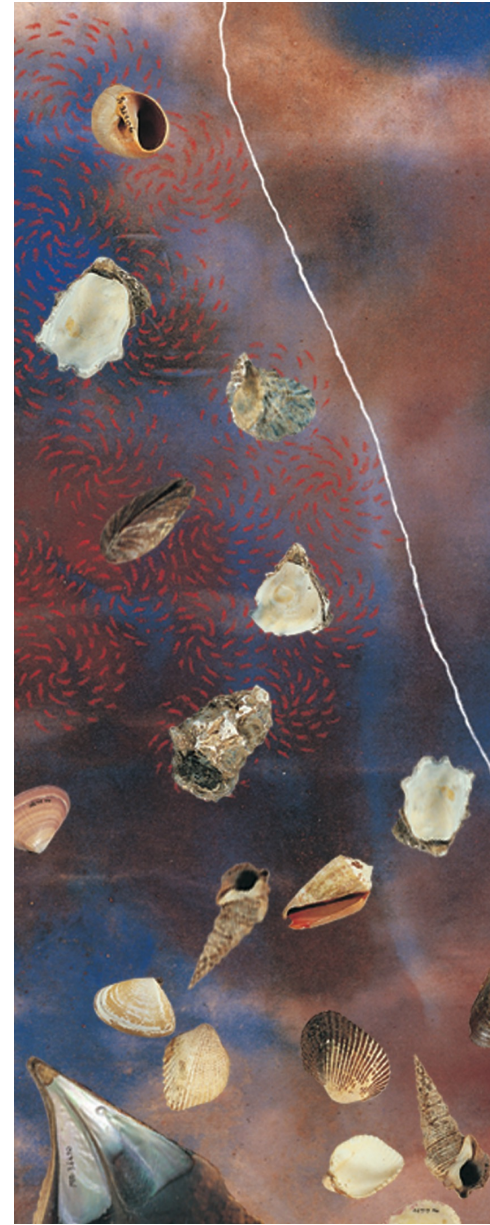
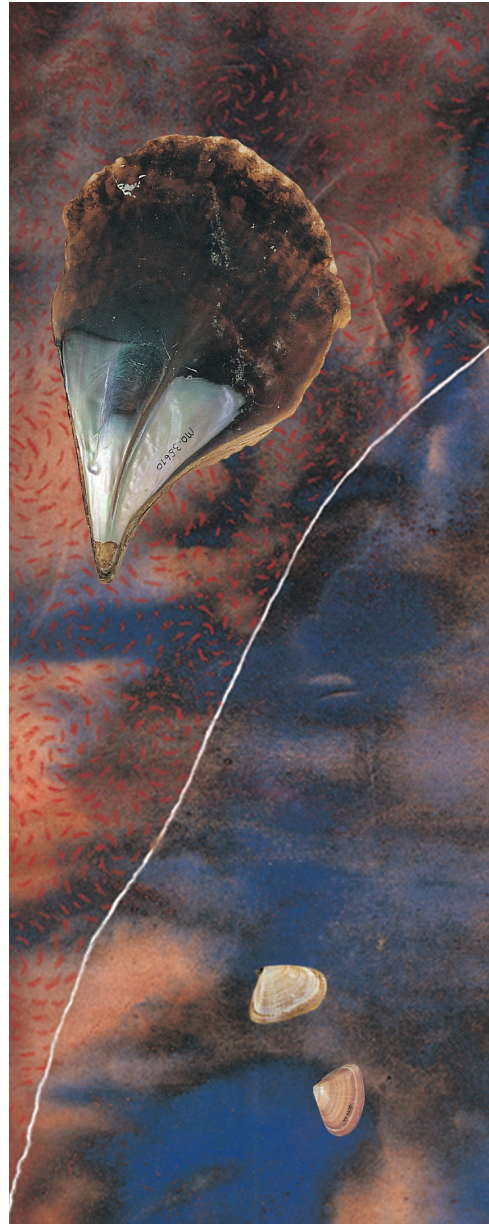
bloom 2009
pigment, ink, pastel and acrylic on canvas
217.5 x 148 cm



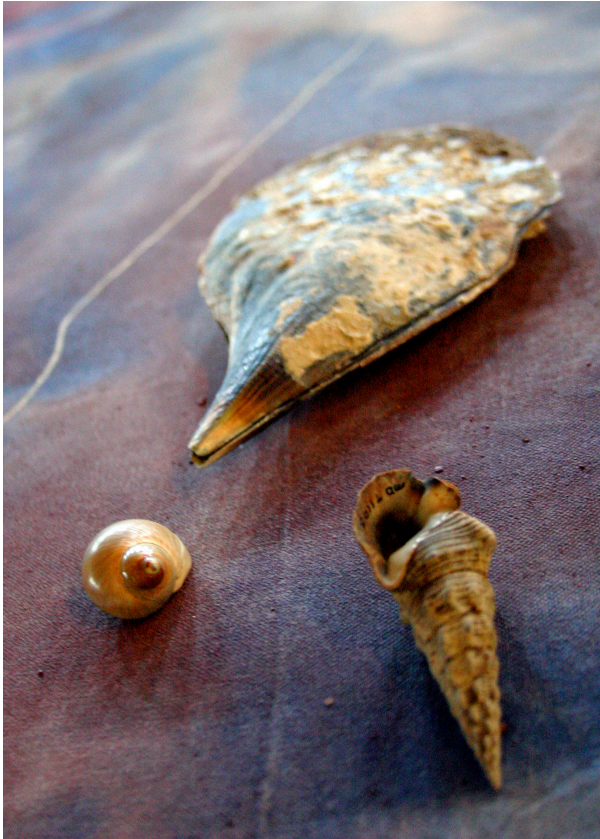
two canoes 2004
pigment, pastel and acrylic on canvas
288 x 212 cm



heart/land/river 2004
8 x 6 m
digital print on glass, fibre-optic lighting and mild-steel
framework
Brisbane Magistrates Court



heart/land/river 2004
detail: Moreton bay shells



heart/land/river 2004
detail : Moreton bay shells